

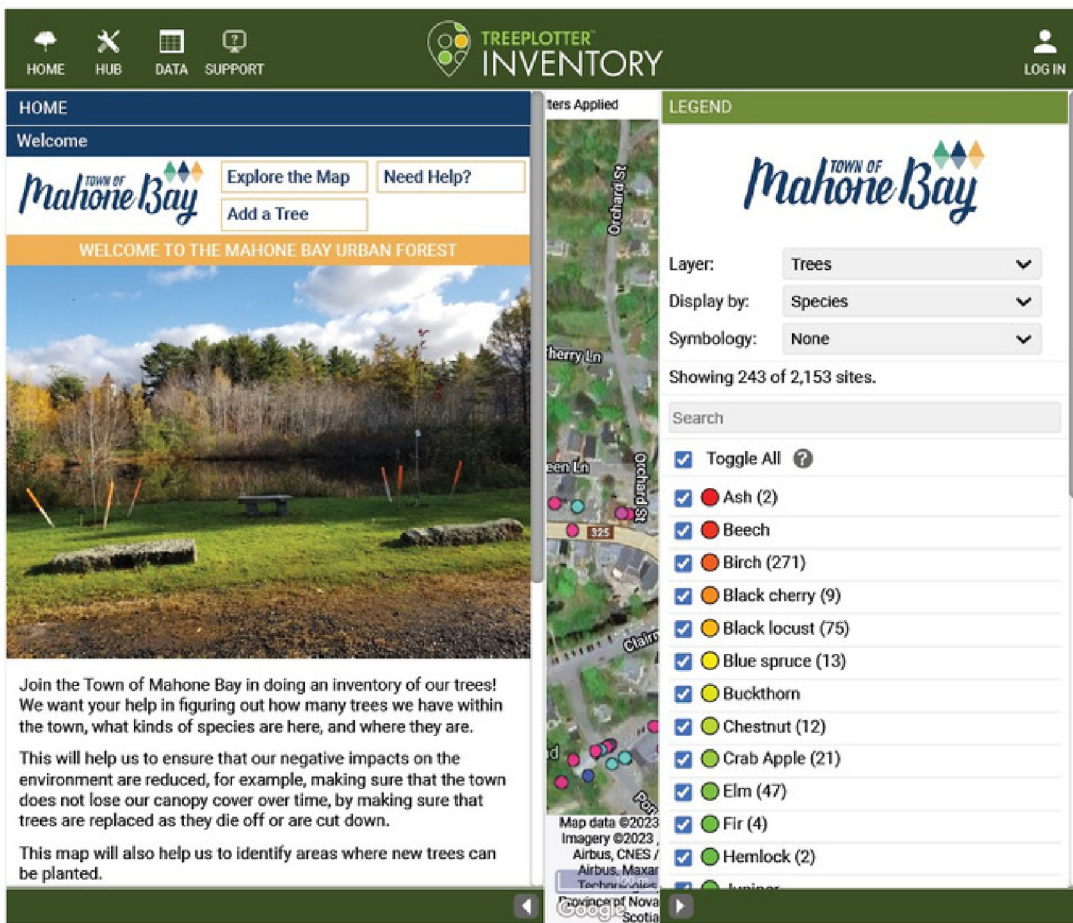
# Tree Mapping Guide

Let's get started!

Add trees to our Town map using your computer or mobile device!

You can access the map here --> [ca.pg-cloud.com/mahonebayns/](https://ca.pg-cloud.com/mahonebayns/)

If you have questions or would like to schedule an in-person meeting, email [climate@townofmahonebay.ca](mailto:climate@townofmahonebay.ca).



**1. Make an account & Log in**

**2. Next select ADD TREES**

Choose: I want to plot each tree's location in the map

# Tree Species

You will be asked to choose what species of tree you are recording.

Feel free to put 'Unknown' if you are unsure.

Each colour on the interactive map is a different species of tree!

Explore our existing trees using the legend.

## TREE IDENTIFICATION RESOURCES



Practice your ID skills with these fun + easy phone apps: iNaturalist and Plantnet



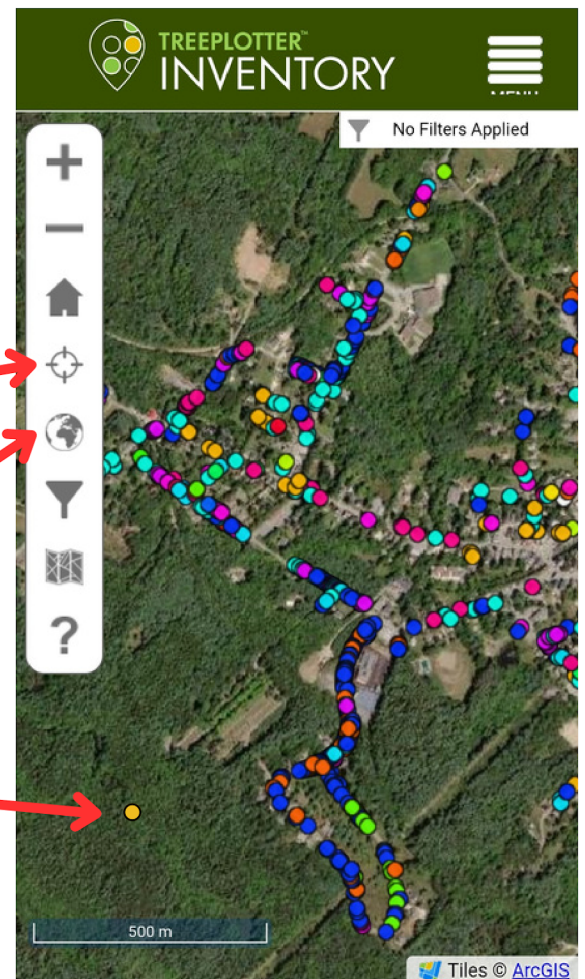
# Tree Location

Next, pick the tree's location. There are tools on the left side for finding the location of your tree:

GPS: Allow your device's GPS to locate your current position

Address: Type in the closest address to the tree

Map: If you know the location, zoom in and tap on the map to place a dot for your tree





## DBH (Diameter of the tree at Breast Height)

This measurement is the width of the tree trunk at a point 1.37m (~4.5 feet) off the ground.

Using a yard stick or tape measure, record how wide the tree is in centimeters at approximately shoulder height. Try to keep your measuring device as straight as possible.

Alternatively, you can measure the circumference with a soft measuring tape and then calculate for diameter (see equation below).

$$\text{Diameter} = \text{Circumference} \div \pi$$

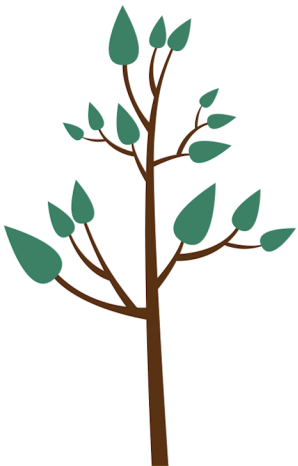
(width of trunk)      (distance around trunk)      (3.14)

## Additional data

The more information you can provide about your tree, the better.

Is the tree a sapling? Is it dead, dying, or just a stump? Does it look diseased? Let us know!

**Tree age**      **Tree height**      **Tree condition**



If you have questions, comments, or would like to schedule an in-person training, email [climate@townofmahonebay.ca](mailto:climate@townofmahonebay.ca)